



VIEW SCANS FROM ANY STATION LOCATION OR FROM KEY PLAN VIEWS IN FULL DETAIL. THE SIMPLE VIEWPORT ALLOWS FOR VIEWING AND EXTRACTION OF POINT CLOUD INFORMATION EASILY

The Trimble® RealWorks® point cloud modeling software enables you to register, visualize, explore and manipulate as-built data collected from your Trimble TX5 3D laser scanner. Once the point cloud is registered within Trimble RealWorks, users can easily model existing pipe from point cloud data using the EasyPipe routine. Finally, export your modeled point cloud for import into popular CAD/BIM packages to jump-start your MEP estimating and detailing tasks.

REGISTRATION –ALIGNMENT

Powerful tools in Trimble RealWorks manage, process, and analyze large data files containing millions of points, enabling you to produce high-quality deliverables. Users can easily register scans together using one of several methods: cloud-based, target-based, target-less or geo-referencing.

MODELING TOOLS

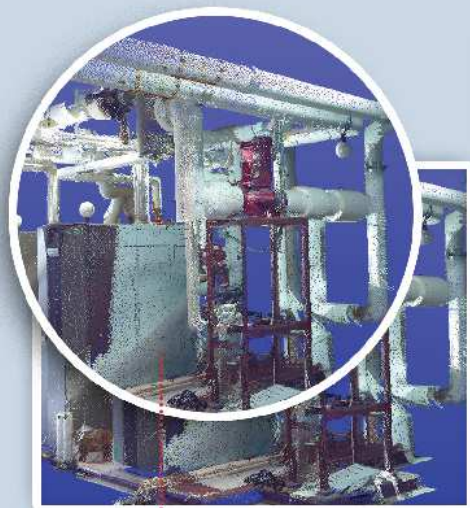
Trimble RealWorks can model diverse shapes to represent the as-built environment by creating CAD compliant 3D solid objects. With the Trimble RealWorks Modeling module enables contractors to create partial or full models very quickly, and is particularly suited to applications where modeled geometries enhance or complete the impact and scope of final deliverables. Additionally, the EasyPipe™ tool allows for automatic modeling of pipes by extracting measured points to generate an accurate pipe diameter and run. Models are perfectly aligned and connected.

PRECONSTRUCTION DESIGN ASSIST

Trimble RealWorks gives users the ability to overlay modeled point cloud conditions with your MEP design model (including your Trimble CAD detailing software) to identify conflicts between design and construction. Verify prefabricated units will fit on the project site by overlaying the scan data in your model before fabrication & shipping.

COLLABORATION

Whether looking to share the data with a general contractor, another sub, or internally Trimble RealWorks offers a variety of collaboration tools for viewing the point cloud data. Trimble RealWorks Viewer gives everyone the ability to view and manipulate scan data in the Trimble RealWorks environment. The Publisher Tool compresses projects into an Internet Explorer-readable package for use by customers and project stakeholders without installing any additional software.



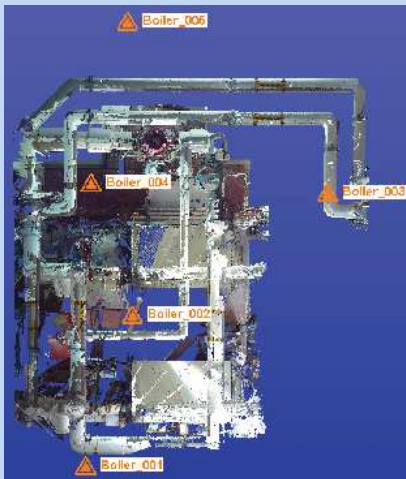
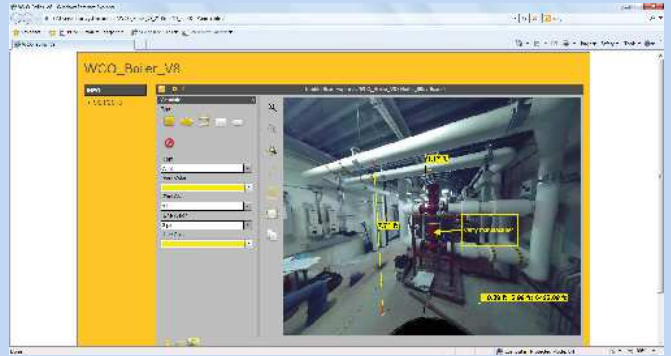
AFTER FULLY REGISTERING AN AREA USERS CAN SEE A COLORIZED POINT CLOUD OF THEIR SPECIFIED DATA



EASYPipe™ TOOL ALLOWS FOR AUTOMATIC MODELING OF PIPES BY EXTRACTING MEASURED POINTS TO GENERATE AN ACCURATE PIPE DIAMETER AND RUN

Key Features

- Collaboration with key stakeholders: Whether with Trimble RealWorks Viewer or the Publisher Tool collaborating and gathering feedback during a project is easy.
- Easily work with data after collected: The tools within Trimble RealWorks allow users to process and easily export to their preferred CAD platform for further modeling.
- Easily Detail Existing Pipe: Automatically create pipe from point cloud data using the EasyPipe tool.
- Preconstruction Design Assist: Overlay modeled point cloud conditions with your MEP design model (including your Trimble CAD detailing software) to identify conflicts between design and construction.



System Requirements

WORKSTATION:

PROCESSOR: 2GHz or higher

RAM: Minimum 4 GB RAM - Recommended 8 GB

OPERATING SYSTEM: Windows® 7 Professional 64-bit, Vista® or XP® (Professional or Home Edition with SP2)

HARDWARE: Three button mouse with wheel; DVD-Rom drive; 1GB, or higher 3D Open GL graphics card



Trimble MEP

10368 Westmoor Drive
Westminster, Colorado, United States, 80021
800-234-3758

meplearning@trimble.com

Trimble MEP
125 Inverness Drive East
Suite 219
Englewood, CO 80121
866-799-6673 (Toll Free)
mepsupport@trimble.com



mep.trimble.com